

**FRIDAY, DECEMBER 27<sup>TH</sup> · 10AM EST**

# *YEAR END VIRTUAL* **EQUIPMENT** **AUCTION**

 **ONLINE/VIRTUAL**  **BID BY PHONE**  **ABSENTEE BID**



*And* **TIMED**  
**ONLINE**  
**ONLY**

# **AUCTION**

**LOTS START CLOSING AT 5PM EST**

**800-451-2709 • [SchraderAuction.com](http://SchraderAuction.com) See Website for Photos & Bidding Information!**



# YEAR END VIRTUAL EQUIPMENT AUCTION

ONLINE/VIRTUAL BID BY PHONE ABSENTEE BID

## FRIDAY, DECEMBER 27<sup>th</sup> . 10AM EST

Equipment located at Various Places Reference Our Online Catalog for Exact Locations!

### TRACTORS

• 2021 John Deere 8R410 MFWD Tractor, E23 PowerShift Transmission, ILS Suspension, Signature Edition, 5 Hydraulic Remotes, 1799 hrs. **Extended Powertrain Warranty** until April 2026 or 3000 hrs/15c • 2020 John Deere 8R370 MFWD Tractor, E23 PowerShift Transmission, ILS Suspension, Signature Edition, 84gpm Pump, Integrated 6000 Receiver, 1994 hrs • 2021 **CIH Magnum 200 AFS, 780 hrs • Versatile 550** • 2021 **Quad Magnum 200 AFS, 780 hrs • John Deere 1720 Stackfold** (CS Planter, John Deere 7000 4R38" w/Dry Fertilizer, Bean Discs, Less than 50 Acres on Complete Opener Rebuild • **Vitteee** seed conveyor, hydraulic drive • **Gooseneck** seed tender, tri-axle, roll tarp, nice

tor w/ Electric Start, 1 Owner, Sharp • **John Deere 1760NT 8RN - JD 750 no-till drill**, w/ Progressive markers, Digi Star scales, firmers, dolly wheel • **Unverferth Seed Runner 3750** seed tender, 10' axle, bumper hitch, roll tarp, Honda motor, dual compartment, 8' loading/unloading conveyor • **Orthan Strip Tiller 12 row • Great Plains 3M-4010P No Till Precision Grain Drill - 40' 10" • John Deere 1535 Bean Planter, 15' • UFT 5000 No Till Drill • JD 1530 15' no-till drill with cart and fill auger, 15' spacing • JD 7200 12 row finger pickup, no till and liquid fertilizer, monitor & fold box • **John Deere 1720 Stackfold** (CS Planter, John Deere 7000 4R38" w/Dry Fertilizer, Bean Discs, Less than 50 Acres on Complete Opener Rebuild • **Vitteee** seed conveyor, hydraulic drive • **Gooseneck** seed tender, tri-axle, roll tarp, nice**

### SPRAYER - SPRAYER ATTACHMENTS

### FERTILIZER EQUIPMENT

• 2020 **CIH 4440 Patriot sprayer**, 1200 stainless boom, 1600 gallon stainless tank, 2100 hrs • 2017 **Hagle STS 125 sprayer**, 1200 gallon stainless tank, 120' boom, 15' spacing, 1787 hrs • 2011 **John Deere 4830 Sprayer**, Simon AccuVolume System w/inside and Outside Display, 1000 boom, 2630 Monitor w/7 Section Boom Shut Off Control, 15' Nozzle Spacing, 3 Way Nozzle Bodies, Auto Boom Trac 5 Sensor, Single Inject Boom Marker System, 3rd Hydraulic Boom Lift Cylinder, Large Stainless Steel Indicator Tank, 1000 Gallon Stainless Steel Tank, High Flow Pump, 4609 hrs/Nice Field Ready Sprayer • (4) 650/65R38 Michelin Tires and Rims off of John Deere 4830 Sprayer • (23) Yield 360 Y Drops w/Brackets off of John Deere 4830 Sprayer • (4) John Deere w/16 Lifts off of John Deere 4830 Sprayer w/Tubing • (4) John Deere Plastic Wheel Covers w/ Hardware off of John Deere 4830 Sprayer • 2009 **Miller Nitro 4275**, 90' booms • **Ach Chem Terra-Gator 1603 sprayer**, 1600 gallon stainless tank, 60' boom, 3004 hrs • **GMC 3700 spray truck**, 60' boom, 1600 gallon stainless tank w/ agitation, big lid, site tube, 3' pto pump, 3208 Cnt, Allison automatic, Raven controller, 27" knife NHS applicator, 5 section fold, Clymer notched chisels, Raven N3H control, Raven 440 controller, nice • **Red Ball 680 sprayer** w/ 90' booms & controls • 2018 **John Knight P5160 17 Ton Tandem Axle Spreader**, Large 1000 PTO, Horizontal Beaters w/ Accumulated Twin Spinners, Scales, Raven Variable Rate w/ Raven CRT Monitor, New Carrier Bearings, New Spinner Plates and Cups, New Sprockets and Gears on Chain Drive,

21.5L-16.1 Tires, Loaded Field Ready, 2nd Owner • 2003 **DMI 5310 16R30 Nutri-Till** w/Markers, Strip Till, 22' Blades, John Blue Ground Drive Pump, Set Up For Liquid, Field Ready, 1 Owner • **Bluet AT4000 15 Knife Side Dress Applicator** w/1400 Gallon Tank, Agsystem Row Units, 3 Section Control, Hydraulic Drive, Ag Leader, Liquid Control Module • **7 Knife 8R38 Anhydrous Applicator** w/End Transport, 033 Mole Knives, New Coulters, Hydraulic Field, 12V Electric • **John Deere 400 15 Rotary Hoe**, 3pt Hitch • **JD 970 24' fold till** cultimulcher, • **JD 400 30' fold rotary hoe** • 2012 **Brillion 25' JD144-x fold rotary rake** • **White 378 6R30' Danish Tire Cultivator** w/Rolling Shields, 3pt Hitch • **John Deere 637 Rock Flex Disk** • **John Deere 200 single basket** • **Case IH 6800 Disc Ripper**, 9 Shank • **John Deere 610 Chisel Plow**, 16 shank • **IH heavy disc**, 21" x 172" spacing • **Brillion 30' cultimulcher** • **John Deere 845 Cultivator** • **Kilbros RFF 12 Crawler** • **John Deere 3355 Disc COMBINES - CORN HEAD - GRAIN HEAD** • **CIH 9120 Axial Flow Combine**, hydraulic tail board, power bin extension, chopper, rock trap, KX7 concave, Pto 700 monitor, 3041 exp/1876 sep • 2012 **40' 12' 6" 1262 draper head**, flip over reel, rock guard, one section on complete rebuild

• **Case IH 1700 Liner rotary rake**, adjustable width rotor, 2 pt hookup, rakes 1 or 2 windrows • **JD 630 McO discbine**, rubber rolls • **JD 457 round baler**, Mega Wide Hydraulic pickup, Edge net wear, twine, monitor • **Silvex 10 wheel rake w/ kicker** • 2012 **H&S RR420 rotary rake**, new curtain, 11.5' working width, 1 Owner • 2007 **John Deere 630B Windrow Forager Chopper Head**, 10' Pick Up Width, 1 Owner • **John Deere MX10 10 Full Tye Rotary Mower**, 540 PTO, Front and Rear Safety Chain Shields, Very Nice • **L&S Line Big Foot 10' 3pt Hitch Rotary Mower**, 540 PTO, Solid Rear Tires • **Brillion F51445 12' Flail Mower**, 540 PTO, 1 Owner • 1987 **New Holland Stackliner 1036**, very low blades, looks like a new one • **New Idea 5209 9' discbine** • **H&S AR10 Wheel Rake** • **Ag Wrap Bale Grabber** - round bale grabber, quick tach

### TILLAGE EQUIPMENT

• 45' **JD 2310 mulch finisher**, 3 bar harrow w/ hydraulic back, new 9' shovels, 5 section fold • 44' **CIH 200 Tiger Mate field cultivator**, 5 bar harrow, new 7' shovels, 5 section fold • 32' **Sunflower 1434 disc**, rock flex, rear hitch • 2018 **Krause 8050 Interceptor 20'**, 20' blades, rolling baskets, 500 total acres, Very Nice • 2012 **39' Landoll VT Plus**, 7' spacing, 22.5' fronts, 20' wings, 5 section fold, rolling basket • **John Deere 5129 S Shank Disk Ripper**, 22.6' Working Width, 20.5' Front Notch Disk Blades, 23" Rear Notch Disk Blades, 22' Disc • 30' **Great Plains Turf** • **3000 T300 VPT**, spider wheels, flat bar basket • 2002 **John Deere 726 26' Mulch Finisher**, Hydraulic Adjust Disk Gang, 5 Bar Pto Tooth Drag w/Rolling Basket, Always Stored Inside • 21' • **Owner • Salford 450-21 field cultivator**, 21'; heavy S-tine shanks & hardened shovels, 2 bar tine harrow, double rolling baskets, good iron • **Glencoe 11 shank disc chisel**, walking tandem, 4' twisted shovels, 5-tine ridge leveler

• **Great Plains 3020 30'** no till drill, 8' spacing • **Unverferth 1225 31'** double rolling basket • 30' **JD 335 disc**, 19.5' fronts, 22' rears, 9' spacing • 40' **Sunflower 3370 7x6 blade plow** • 37' **JD 1610 chisel w/ Flex King Pickers** • 1986 **White 253 13'** Tandem Wheel Disk 20' Blades, Nice • 1 Owner • **Unverferth 1225 53'** double rolling basket • 1977 **Allis Chalmers 13'** Field Cultivator w/3 Bar Remlinger Spike Harrow, 1 Owner • **Dunham 8' Cultivator**, 1 Owner • **John Deere 400 15 Rotary Hoe**, 3pt Hitch • **JD 970 24' fold till** cultimulcher, • **JD 400 30' fold rotary hoe** • 2012 **Brillion 25' JD144-x fold rotary rake** • **White 378 6R30' Danish Tire Cultivator** w/Rolling Shields, 3pt Hitch • **John Deere 637 Rock Flex Disk** • **John Deere 200 single basket** • **Case IH 6800 Disc Ripper**, 9 Shank • **John Deere 610 Chisel Plow**, 16 shank • **IH heavy disc**, 21" x 172" spacing • **Brillion 30' cultimulcher** • **John Deere 845 Cultivator** • **Kilbros RFF 12 Crawler** • **John Deere 3355 Disc COMBINES - CORN HEAD - GRAIN HEAD** • **CIH 9120 Axial Flow Combine**, hydraulic tail board, power bin extension, chopper, rock trap, KX7 concave, Pto 700 monitor, 3041 exp/1876 sep • 2012 **40' 12' 6" 1262 draper head**, flip over reel, rock guard, one section on complete rebuild

• 45' **Unverferth McCurdy 745 Roadrunner header cart**, bicycle front end, tandem axle, light kit • 2014 **John Deere 5680 Combine**, 2WD, Contour Master, Sep Feeder House, 2 Drive, Transmission w/Harvest Smart, 2630 Monitor, Power Folding Bin, Powercast Powered Tailboard, Command Touch Multi Speed Drive, 5-Ser DP Tooth Adj Chaffer, Chopper, Premium Cab, JD Link, 2707 exp/178 sep, 2nd Owner. Inspected by John Deere Dealer Annually • **Unverferth 2013 Cih 8230 Combine**, 4WD, Pto 700, 2018 **Krause 8050 Interceptor 20'**, 20' blades, rolling baskets, 500 total acres, Very Nice • 2012 **39' Landoll VT Plus**, 7' spacing, 22.5' fronts, 20' wings, 5 section fold, rolling basket • **John Deere 5129 S Shank Disk Ripper**, 22.6' Working Width, 20.5' Front Notch Disk Blades, 23" Rear Notch Disk Blades, 22' Disc • 30' **Great Plains Turf** • **3000 T300 VPT**, spider wheels, flat bar basket • 2002 **John Deere 726 26' Mulch Finisher**, Hydraulic Adjust Disk Gang, 5 Bar Pto Tooth Drag w/Rolling Basket, Always Stored Inside • 21' • **Owner • Salford 450-21 field cultivator**, 21'; heavy S-tine shanks & hardened shovels, 2 bar tine harrow, double rolling baskets, good iron • **Glencoe 11 shank disc chisel**, walking tandem, 4' twisted shovels, 5-tine ridge leveler

• **Kilbros 1200 graincart**, trap, lights, new vertical augers last season, small pto • **Demco 650 grain cart with tarp**, Nice • **Brent 670 grain cart** • **Brandt 1585 grain conveyor**, Eaton 13 pto • **Westfield Auger MKX130-74 Grain Auger**, Low Pto Hoop, Hydraulic Power Swing Hoop, Hydraulic Lift, Less than 15 hrs on New Gear Box • **Kory 225 Gravity Wagon** w/Kory 6072 Running Gear

### LIVESTOCK EQUIPMENT

### GENERATOR - GRADER BLADE

• **Balzer 4800 Magnum liquid manure injector**, 4 shank injectors, hydraulic drive & lid, like new 30.5L-32 tires • 1997 **New Idea 3739 Tandem Axle Manure Spreader** w/Hydraulic End Gate, Top Beater, 540 PTO, T-Link Chain Apron, Good Pto Flyer, 2nd Owner • **Nice Field Ready - New Idea 3639 Tandem Axle Manure Spreader** w/Hydraulic End Gate, Single Beater, 540 PTO, Newer T-Link Chain Apron • **Needs New Floor - New Holland 195 manure spreader**, slope gate • **Case IH 1360 Grinder Mixer**, 4 Ton, Scales, Remote Swing Unloading Auger, 17 1/2' Unloading Auger, Hydraulic Drive Augers, 540 PTO, Screens • **Hydraulic Lift** 18' Long x 6' Wide Hog Cart, Metal Mesh Floor • **Wind Power Portable 540 PTO Generator** • **John Deere 70 3pt Hitch 7' Grader Blade**, One Owner

• **Stahl Universal Fit Short Bed Single Wheel Service Body**, 6 compartments, 82' long, 38" from cab to axle, bumper has small dent on left side, came off of 2016 Dodge 2500 4x4 • 1500 **Gallon Steel Fuel Tank** w/Runner and 110 Volt Fill-Rite 700 Series Electric Pump. Tank Has Been Steel Wheel Wired Brushed and Sandblasted and 2 Coats of Paint Applied • **Biggs Boiler Works 15000Z Gallon Steel Tank** w/4 Saddle Kneefolds, Hydraulic Deck Plates, Intermeshing Brackets and Glass Liner, 11' D x 20' L (22' 6" overall length). Was used to handle Liquid 28 Nitrogen in it and last used 2 yrs ago • 2400 **gallon stainless Progressive Tank**, big lid, baffles • 2000 **gallon poly banded tank**, 3" banjo valve • 550 **gallon fuel tank** w/ electric pump

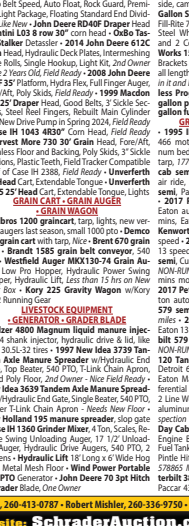
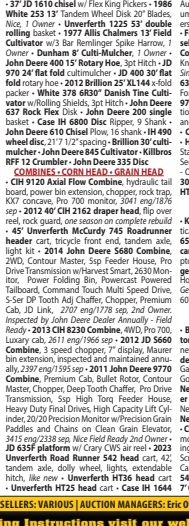
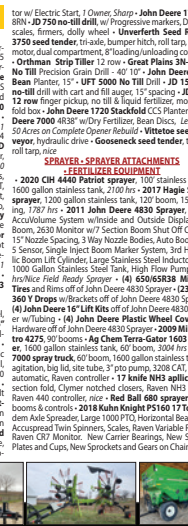
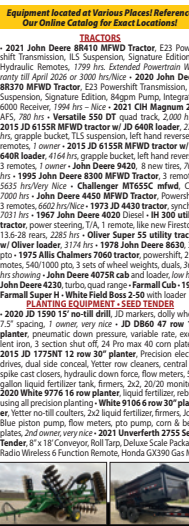
### GRAIN TRUCKS - SEMIS - TRUCKS

• 1995 **IH 4900 tandem axle graintruck**, DT 466 motor, Spicer 10 speed, 20' Scott aluminum bed, air ride seat, cargo doors, Shurco roll tarp, 177458 miles • 2019 **Kenworth T680 day cab semi**, 450hp **Paccar motor**, **Paccar auto**, air ride, 155k miles • 2017 **Peterbilt 579 semi**, **Paccar motor**, Eaton auto, 764962 miles • 2017 **Peterbilt 579 semi**, Cummins motor, Eaton auto • 2016 **Peterbilt 579 semi**, Cummins, Eaton 13 speed, **NON-RUNNING** • 2015 **Kenworth T680 semi**, **Paccar motor**, Eaton 10 speed • 2014 **Volvo VNL semi**, Cummins, Eaton 13 speed, **NON-RUNNING** • 2017 **Peterbilt 579 semi**, Cummins, Eaton automatic, 917244 miles, **NON-RUNNING** • 2017 **Peterbilt 579 semi**, Cummins, Eaton automatic, 1008753 miles • 2017 **Peterbilt 579 semi**, Cummins motor, Eaton automatic, 962689 miles • 2014 **Peterbilt 579 semi**, Cummins, Eaton 13 speed, 851329 miles • 2016 **Kenworth T660 semi**, Cummins, Eaton 13 speed, 827809 miles • (2) 2017 **Peterbilt 579 semi**, Cummins motor, Eaton auto, **NON-RUNNING** • 2015 **Freightliner Columbia 120 Tandem Axle Day Cab Semi** Gilder Kit, with Detroit 60 Series 500 hp w/Engine Brake, 10sp Eaton Manual Trans, Air Ride Suspension, Differential Locks, Sliding 5th Wheel, Dual Tanks, 2 Line Wet Kit w/Hydraulic Tank, Air Ride Seat, aluminum outers, 52,126 Miles, Fresh DOT Inspection • 2012 **Peterbilt 386 Tandem Axle Day Cab Semi**, Cummins ISL 425hp Engine w/Engine Brake, 10sp Eaton Manual Trans, Dual Fuel Tanks, Differential Locks, Sliding 5th Wheel, Pintle Hitch, Air Ride Suspension, Air Ride Seat, 578865 Miles, All Emissions Deleted • 2012 **Peterbilt 386 Tandem Axle Day Cab Semi**, MX13 Paccar 430hp Engine w/Engine Brake, 10sp Eaton Manual Trans, Differential Locks, Air Ride Suspension, Air Ride Seat, 767232 Miles, All Emissions Deleted • 2011 **IH Dura Star semi**, auto, 132526 miles • 1994 **IH 9400 grain truck** w/ 22' bed, Detroit 60 series engine, 10 speed • 1997 **Freightliner FL120 daycab semi**, N14, 10 speed, good condition • 1989 **International 9300 Tandem Axle Day Cab Semi**, Cummins 855 Engine w/350 hp, 9sp Eaton Manual Trans, Air Ride Suspension, Differential Locks, Sliding 5th Wheel, Dual Tanks, Aluminum Tool Box, Air Ride Seat, aluminum outers, 965547 Miles, Fresh DOT Inspection • 2006 **IH 8600 graintruck** w/ 18' aluminum bed, new Shurlock tarp, 10 speed • 2014 **Ford F350 crew cab dually XL pickup**, 4x4, 6.7 diesel, auto, service bed w/ tool boxes, 240k miles, 2024 Miller Bobcat 230 welder, leads, gas line, ONLY 6 hrs, Miller Arc Reactor Sulfate B wire feeder, stick welder, TIG welder, 100 spool • 2006 **Ford F250 XL pickup**, single cab, 4x4, 5.4L, 6,69602 miles • 2006 **Ford F350 pickup**, King Ranch, 4x4, 6.0 diesel, crew cab, long bed, 302k miles • 2003 **Ford Econoline E450 dump truck**, Knaphost, 7.3L Powerstroke, automatic, dually, 10' landscaping bed, mesh tarp, folding sides, 295328 miles

### TRAILERS

• 1998 **Trailor 38' x 102' Tandem Axle Semi Dump Trailer**, Roll Tarp, Air Ride Suspension, Air Release Tail Gate, Single Hydraulic Hose, 8 Aluminum Rims • 1958 **Transport 34' Flatbed Tandem Axle Semi Trailer**, Walking Beam Suspension, 24 Total Deck, 16 Deck from Neck To Tires, 100 Gallon Fuel Tank, 1994 **Transcraft liquid nurse trailer**, (2) 3200 gallon tanks, inductor, air ride, 4x4x96" • 2007 **Wilson Commander 43' hopper bottom**, Shurlock 4500 electric tarp, air ride • 2008 **Strick w/ trailer**, 53'x102' air ride • 96" x 24' single axle liquid nurse trailer, 2000 gallon poly banded tank, Honda motor, cast pump • **Semi fertilizer tender trailer** with Willmar 16 ton side shooter box • 2018 **Featherlite 8117-712E-STD 24' Long x 78" Wide** Aluminum Gooseneck Tandem Axle Livestock Trailer, 2 Stationary Cut Gates w/Sliding Gates, Rear Swinging Door w/Sliding Gate, Passenger Side Access Door, Plexiglas Winter Kit, Exterior and Interior LED Lights, Tires, Spare Tire, One Owner. Put In Use In 2020 • Nice • 2009 **Lawrime 18' gooseneck implement trailer**, 2' beavertail, 83" between fenders, new brakes on both axles, new bearings, new brake away kit, 2 ramps, stakes, docking, load lights, new spare tire, 77 hrs, axle, P-rings • 1999 **Featherlite**

• **We Will Be Calling Bids On Each Item From A Remote Location** •  
1) Bid Online at SchradersAuction.com  
2) Bid by phone during the auction. Call no later than THURSDAY, DECEMBER 26<sup>th</sup> 12pm to schedule your call.  
3) Bid by submitting an absentee bid on the item that you are interested in. Absentee bids need to be turned in no later than THURSDAY, DECEMBER 26<sup>th</sup> 12pm!  
SCHRADER HOME OFFICE WILL BE CLOSED THURSDAY, DEC. 24<sup>th</sup> @ 12pm | WEDNESDAY, DEC. 25<sup>th</sup>



SELLERS: VARIOUS AUCTION MANAGERS: Eric Ott, 260-413-0787 • Robert Mishler, 260-336-9750 • Mark Schroeder, 260-564-0570

For updates & Bidding Instructions visit our website: [SchradersAuction.com](http://SchradersAuction.com) or [Schrader.Nextlot.com](http://Schrader.Nextlot.com)

**SCHRADER**  
Real Estate and Auction Company, Inc.  
**800-451-2709**

# YEAR END VIRTUAL EQUIPMENT AUCTION

ONLINE/VIRTUAL BID BY PHONE / ABSENTEE BID

**FRIDAY, DECEMBER 27<sup>TH</sup> • 10AM EST**



aluminum 3 horse trailer, slant load with dressing room, 5' short wall, tack room, rubber floor & wall, rear tack • 16' PJ gooseneck dump trailer • 2022 40' Iron Bull tri-axle gooseneck implement trailer • East Frameless Alum 30' Dump Trailer • Wilson Road Brute Hybrid Drop Deck trailer • Hobbs Grain Hopper Trailer, 42' • Fruehauf 7,000 gal liquid manure tanker trailer • Farm Built Military Dump Trailer • 16' tandem axle trailer, 88" wide, NO TITLE • 2023 Sure Trac car hauler, 16', 2 ramps

### SKIDSTEER • LOADERS • CONSTRUCTION EQUIPMENT

• 2022 Kubota R640R3 articulated loader • 2021 Bobcat T66 skid steer, 1540 hrs, 2 speed, hi flow, hand/foot controls • KUBOTA SVL75-S Skidsteer, full cab • CAT IT14B wheel loader, Balderson 8' bucket w/ new cutting edge, Michelin 15.5R25 tires, quick tach, front fenders • 2012 CAT 320EL excavator, 6800 hrs, 2nd owner, CAT quick coupler, 80% undercarriage, 4' bucket, clean unit • Case 1845C skid steer, Cummins, 72" bucket, 6096 hrs • John Deere 860 Pan Scraper • John Deere 840 Pan Scraper • John Deere 755 track loader, new iron • Vermeer M-475 trencher • SP Industries 2101 Roll Off Compactor • GP Division Cardboard Baler • 2008 John Deere 320 Skid Loader, Hand Controls, 8 Rear Weights, 5003 Hrs - One Owner • Kelly B60C 3pt Hitch Backhoe w/540 PTO Hydraulic Pump, 18" Bucket, 12" Bucket, One Owner • 2' CAT bucket • Grapple for CAT excavator • Buschland XTS 3pt silt fence plow

### GPS BASE STATION/PRECISION

• JD 6000 Starfire Globe • (4) JD 4640 displays • (3) JD extended displays • JD 4240 Monitor • JD Autotrac Universal 300 • JD ATU 200 steering wheel • (4) John Deere 3000 Receiver • (3) John Deere 2630 • John Deere 2600 • Trimble FM 750 kit • (3)

**• WE WILL BE CALLING BIDS ON EACH ITEM FROM A REMOTE LOCATION •**

- 1) Bid Online at [SchraderAuction.com](http://SchraderAuction.com)
- 2) Bid by phone during the auction. Call no later than **THURS., DEC. 26<sup>th</sup>, 12pm** to schedule your call.
- 3) Bid by submitting an absentee bid on the item that you are interested in. Absentee bids need to be turned in no later than **THURS., DEC. 26<sup>th</sup>, 12pm!**

**SCHRADER HOME OFFICE WILL BE CLOSED:  
TUES., DEC. 24<sup>TH</sup> AT 12PM | WED., DEC. 25<sup>TH</sup>**

Trimble Nav II controllers • CNH Nav III controller • (2) Trimble 162 Receivers • (3) CNH Pro 700 • (3) CNH 372 • Trimble 382 receiver

### CAMPER • BOAT • GOLF CARTS • ATV

• 2014 Forest River Georgetown 328 motor home, Ford V10, Onan generator, 3 slide outs, 3 TVs, stainless appliances, 2 AC units, sleeps 6, 30396 miles • Ranger 521VX Comanche bass boat, 3.1L Yamaha Vmax 250 motor, Minn Kota Terrova trolling motor, 2 Hummingbird Helix 10 fish finders, 2 swivel seats, very nice • 2015 Yamaha electric golf cart • 2018 Yamaha Drive2, gas • ODES LZ2800-6 4x4, ATV • Club Car electric golf cart, new batteries in May of 2024, roof, foldable windshield • Honda Rincon ATV, 4x4, independent rear suspension, 635 hrs, 4293 miles

### COLLECTOR CAR - CUSHMAN

• 1968 Chevrolet Corvette 427 Tri Power Coupe • 1965 Cushman Silver Eagle • 1964 Daytona Studebaker car, 259 V8, automatic • 1931 Ford Phaeton, V8, fiberglass body, 89964 miles

### MISC FARM EQUIPMENT

• Kewanee tandem running gear, extendable tongue, implement tires, trails good • Wolverine Sickle bar Mower • Boss Power VXT 8' 2" V - Plow • Westerdorf Loader • 3pt snow blower

### ROGER KAISER RETIREMENT AUCTION

• 2012 John Deere S660 Combine • John Deere 635FD • J&M 4WS15 Header cart • John Deere 608C corn head • John Deere CX20 Rotary Mower • John Deere 8450 3pt, PTO • John Deere 1770 NT 16 RN • John Deere 4555 2wd • John Deere 8760 • J&M 500 Gravity Wagon • JD 6000 globe • JD 2630 display



## TIMED ONLINE ONLY AUCTION

**LOTS START CLOSING AT 5PM EST**

er blade • Fast hitch to 3pt adaptor • 3pt head mover • Brillion 3pt 6 row cultivator for parts • New Idea 3pt 6 row cultivator, Danish tine • (2) 18.4-38 tires • 8' Sweepster broom, power angle, 540 pto • CIH 2188 combine radiator • IH 730 4 bottom plow, variable width, good iron, semi mount • 250 gallon propane tank • NI 213 manure spreader, needs work • (2) Firestone 28L-26 rear combine tires & rims for CIH combine • (4) Firestone 480/80R46 tires • 24' free standing corral gates • JD combine parts • Down spout and auger parts • Sunflower rear hitch • Kinze planter hitch • LP tanks • Huskee log splitter, vertical or horizontal, Briggs motor • Assorted tractor weights • (2) NEW JD 1770NT single disc fertilizer units, off 7" frame • Several elec motors • Cattle hay and grain feeders • JD quick hitch • Navigator hitch • Log splitter • Rear tractor tires, duals and front tires • NEW - skid steer snow push boxes • NEW - forklift dumpsters • (12) misc tractor weights • DMI cushion truck bumper • (6) stalk stompers w/ brackets for CIH 1063 cornhead, never installed

### VISIT [SCHRADER.NEXTLOT.COM](http://SCHRADER.NEXTLOT.COM) TO VIEW ITEMS, PHOTOS & BIDDING INSTRUCTIONS

• 8" Honeyville U-trough, 50' auger, 55' catwalk, Baldor 5hp 3 phase motor • Sun-set equipment cattle chute w/ palpation cage • 180 degree cattle working tub • (2) 25' aluminum truck flatbeds • Sioux cattle headgate • (8) 100# suitcase weights, 7 are stamped IH • John Blue LM2455 liquid pump • 6' fast hitch grad-



Equipment located at Various Places! Reference Our Online Catalog for Exact Locations!



# YEAR END VIRTUAL EQUIPMENT AUCTION

**CORPORATE OFFICE:**

950 N. Liberty Dr., Columbia City, IN 46725  
 email: auctions@schraderauction.com

**AUCTION MANAGERS:**

**Eric Ott, 260-413-0787**  
**Robert Mishler, 260-336-9750**  
**Mark Schroeder, 260-564-0570**

AC63001504, AU11600071, AU08701553, AU12300016

**ONLINE/VIRTUAL** **BID BY PHONE** **ABSENTEE BID**



**TERMS:** Cash or Check w/proper ID. 3% surcharge fee for credit cards. Announcements made the day of the auction take precedence over any printed material. Not responsible for accidents.

\*Internet Buyers' Premium is 2.5% capped at USD \$750 per lot for Virtual Auction Items.  
 \*10% Buyer's Premium per lot on Timed Online Items.

Follow us on:

Get our iOS App



**800-451-2709**  
**www.SchraderAuction.com**

DECEMBER 2024						
SUN	MON	TUE	WED	THU	FRI	SAT
1	2	3	4	5	6	7
8	9	10	11	12	13	14
15	16	17	18	19	20	21
22	23	24	25	26	<b>27</b>	28
29	30	31				

**• VIRTUAL BEGINS at 10AM EST •**  
**• ONLINE BIDDING STARTS CLOSING at 5PM EST •**



**PLUS Misc Farm Items**  
**Timed Online Only**  
**LOTS START CLOSING:**  
**Fri., Dec. 27<sup>th</sup>**  
**at 5:00 pm EST**  
 See website for details

*Equipment located in Colorado, Indiana, Ohio, Kentucky, Michigan and Wisconsin!*



# YEAR END VIRTUAL EQUIPMENT AUCTION

**FRIDAY, DECEMBER 27<sup>th</sup> • 10AM EST**

**800-451-2709**  
**SchraderAuction.com**  
 See Website for more Information

