

# Retirement AUCTION

Thursday, December 15 *Timed Online Only*

Lots start closing at 10:30am



707 S Felton Rd, Liberty, IN 47353 • Union County

- TRACTORS – SKID LOADER
- SEMI – HOPPER BOTTOM
- TRUCKS – TRAILER
- TILLAGE
- GRAVITY WAGONS
- PLANTING – 28% APPLICATOR
- ROTARY MOWERS
- MISCELLANEOUS



800.451.2709  
SchraderAuction.com



# Retirement AUCTION

Thursday, December 15 *Timed Online Only*

Lots start closing at 10:30am



707 S Felton Rd, Liberty, IN 47353 • Union County

- TRACTORS – SKID LOADER
- SEMI – HOPPER BOTTOM
- TRUCKS – TRAILER
- PLANTING – 28% APPLICATOR
- TILLAGE
- GRAVITY WAGONS
- ROTARY MOWERS
- MISCELLANEOUS



800.451.2709  
SchraderAuction.com



**SCHRADER**  
Real Estate and Auction Company, Inc.  
PO Box 508 • 950 N Liberty Dr  
Columbia City, IN 46725  
800.451.2709 • 260.244.7606  
#AC8300IS04, #AU019400167, RC22-SS4  
Follow Us and Download Our Schrader IOS App:  
f YouTube App Store

*Auction Manager:*  
Andy Walther • 765.969.0401  
andy@schraderauction.com

# Retirement AUCTION

Thursday, December 15 *Timed Online Only*

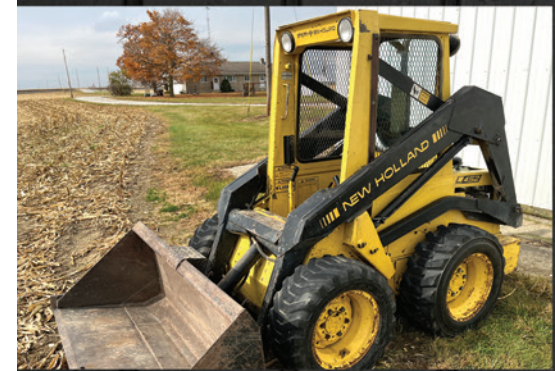
Lots start closing at 10:30am

DECEMBER

| Sun | Mon | Tue | Wed | THU | Fri | Sat |
|-----|-----|-----|-----|-----|-----|-----|
|     |     |     |     | 1   | 2   | 3   |
| 4   | 5   | 6   | 7   | 8   | 9   | 10  |
| 11  | 12  | 13  | 14  | 15  | 16  | 17  |
| 18  | 19  | 20  | 21  | 22  | 23  | 24  |
| 25  | 26  | 27  | 28  | 29  | 30  | 31  |

TERMS: Cash or check with property ID. 3.5% surcharge fee for credit cards. Announcements day of auction take precedence over any printed material. Not responsible for accidents.

800.451.2709  
SchraderAuction.com





# Retirement AUCTION Timed Online Only

Thursday,  
December 15  
Lots start closing  
at 10:30am

707 S Felton Rd, Liberty, IN 47353 • Union County



## TRACTORS – SKID LOADER

› **1997 CASE-IH 8940 Magnum MFWD**, Powershift 18F/4R, (4) hyd. outlets, (22) frt. weights, rear outside 3pt. control, 1-1/2" 1000 rpm pto, 420/85R/42 Firestone rear tires w/ duals, 380/85R/30 front tires, 4,920 hrs., SN JJA0073353  
› **1997 CASE-IH 8920 Magnum, 2wd**, Powershift 18F/4R, (3) hyd. outlets, dual 540 & 1000 pto, (18) front weights, rear tires 420/85R/42 Firestone duals, 14L-16.1SL fronts, 6,221 hours, SN JJA0075805

› **1988 Case-IH 7130 Magnum, MFWD**, 18 speed Powershift w/4 speed reverse, 2 hyd. outlets, dual 1000 pto, 18.4R-42 Firestones rears w/snap on duals, 14.9R28 front tires, (18) front weights, ONE OWNER, 4,843 hours, SN JJA0002914

› **1971 JOHN DEERE 4020 Diesel, M & W Turbo**, 18.4-38 Firestone tires, 2 remotes, 540 pto, (8) front slab weights, rear wheel weights, 10,700 hours, SN 254655R

› **1985 JOHN DEERE 950 Diesel Tractor**, 4x4, canopy, 12.4-28 Firestone rear tires, 5.50-16 fronts, 4 speed transmission w/ Hi-Lo, 3,081 hours, SN CH0950S024176

› **1945 Farmall B**, narrow front, 11.2-24 rear tires with wheel weights, repainted

› **NEW HOLLAND Skid Steer L452**, gas Wisconsin engine, material bucket, ONE OWNER, 2,123 hours

## SEMI – HOPPER BOTTOM – TRUCKS – TRAILER

› **1998 MACK E7-427CH613 Semi Tractor**, 13 sp. Maxitorque transmission, Day cab, aluminum steer rims & fuel tanks, Full aluminum rear fenders, 800,777K miles, VIN#1M1AA18YXWW092077

› **2009 TIMPTE Hopper Bottom**, 96" x 72" x 34", air ride, roll-tarp, aluminum outer rims, very nice, ONE OWNER

› **1999 IH 9100, tandem axle truck**, Cummins ISM 280, Rockwell 10-speed Transmission, aluminum rims & fuel tanks, Kann 20' aluminum grainbox, cargo doors with (3) lift gates, Agricovert 2 spool roll-tarp, 592,100 miles, VIN#2H5FPAHN8XC089998

› **2013 FORD F-350 XLT Super Duty**, extended cab, 6.7L Powerstroke Diesel, 4x4 with FX4 Off-Road Package, gooseneck ball, 6.5' bed, ONE OWNER, 84K miles

› **2009 SURETRAC Gooseneck Trailer**, 20' deck plus 6' dovetail, 3 ramps, tandem axle w/duals, ST 23.5/18D/16R tires, never in salt, very nice, ONE OWNER, low miles

## TILLAGE

› **CASE-IH 330 Turbo 22' Vertical Tillage Tool**, rear rolling basket, Hydraulic Fore/aft, guage wheels, single point depth control, walking tandem tires on mainframe and wings, very nice, ONE OWNER, SN YDD065871

› **CASE-IH 2500 Ecolo-Till Ripper**, 5 shank, lights, 3pt., very nice, ONE OWNER, SN JFH0038864

› **CASE-IH Tiger Mate II Field cultivator**, 26'6", 3-bar spike harrow with rolling baskets, walking tandem tires on mainframe & wings, guage wheels, ONE OWNER, SN JFH0031952

› **JD 510 Disk Ripper Chisel**, 5 shank, new scrapers, light kit, ONE OWNER, SN N00510X003348

› **SUKUP 600 High Residue Cultivator**, 8 row, row shields, folding wings, nice

## PLANTING – 28% APPLICATOR

› **KINZE 3500 8 row x 30" planter**, Liquid Fertilizer, insecticide boxes, KPM2 Monitor, corn & bean meters, very nice, ONE OWNER, SN 903240

› **CLARK 750 Gallon 28% liquid applicator**, 9 shank w/Clymer front openers, John Blue pump, newer iron, ONE OWNER

## GRAVITY WAGONS

› **KILLBROS Mod. 375 box**, Killbros 12T gear, 12.5-16SL gear, extendable tongue, #1

› **KILLBROS Mod. 375 box**, wood extension top boards, GEHL gear, 11L-15 tires, extendable tongue, #2

› **UNVERFERTH 230 Bushel box** on Farmer's Pride gear, 10.00-15SL tires, extendable tongue, #3

› **UNVERFERTH 230 Bushel box** on GEHL gear, 11L-15 tires, extendable tongue, #4

› **UNVERFERTH 230 Bushel box** on Farmer's Pride gear, 11L-15SL tires, extendable tongue, #5

› **UNVERFERTH 230 Bushel box** on Farmer's Pride gear, 10.00-15SL tires, extendable tongue, #6

## ROTARY MOWERS – MISCELLANEOUS

› **BUSH HOG 2610L Legend Rotary Mower**, 12', Batwing single-sided, 1000 pto, (6) Rubber wheels, front & rear chains, ONE OWNER, SN 12-01195

› **FRONTIER RC2060 Rotary Mower**, 5', 3pt.

› **KEWANEE 9' Grader blade**, hydraulic adjust, heavy duty

**AUCTION NOTE:** After a successful career in farming, brothers Duane and Darrell Felton are retiring. This is an excellent group of equipment with good maintenance and care. Many items are one owner. Plan now to participate in this **ONLINE ONLY AUCTION**. Equipment can be viewed at the farm near Liberty, IN.



Owners:  
Darrell & Duane Felton



Auction Manager

Andy Walther • 765-969-0401

800.451.2709  
SchraderAuction.com

