

Kosciusko County, IN

REAL ESTATE AUCTION

TIMED ONLINE ONLY

Bidding
Opens: **March 16th @ 8am**

Bids
Close: **March 23rd @ 6pm**



*Beautiful Home on .5± acres
in Downtown North Webster*

Directions: 302 W Washington St, North Webster, IN From the intersection of SR-13 and Washington St in downtown North Webster, head west on Washington Street and continue for 450 feet. The property will be on your right.

- 1,540 sq feet.
- Well maintained property-see tract description for recent maintenance
- Walking distance to downtown North Webster
- Under ½ mile to Lake Webster
- Detached shed with electricity
- 2 Bed/1 Bath w/possibility of 3rd bdrm



Tract 1- Beautiful 2 bed/1 bath town home in downtown North Webster sitting on a half-acre lot. Contains 1,540 sq ft. Possibility for a 3rd bedroom if office room is converted. Several renovated features including newer entry and storm doors, gas stove, new roof in 2010, new culligan softener installed in 2015, Smith Proline Commercial Grade Water Heater installed in 2018, gas furnace installed in 2003, and all new electrical in 2015. Also has 12' x 12' shed built in 2015 with electricity. Plenty of living space with living room, dining room, and pantry/den.



Auction Location: Bid at [schrader.nextlot.com](https://www.schrader.nextlot.com)

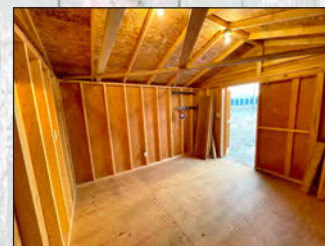
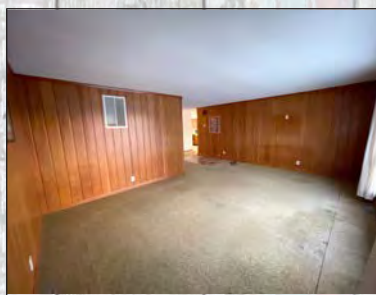
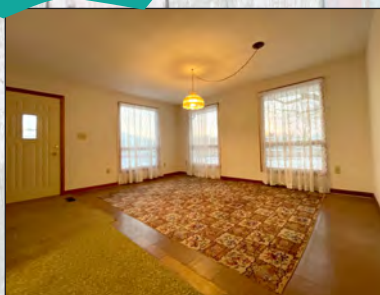
Sellers: Malcolm Joe Beezley, Sheila Beezley & Teresa M. Day
Auction Manager: Luke Schrader • 260-229-7089

800-451-2709 • www.schraderauction.com

Bid at schrader.nextlot.com



March 2nd • 3pm-5pm
March 13th • 8am-10am
March 21st • 1pm-3pm



DEED: Seller shall provide a warranty Deed.

ACREAGE: All tract acreage, dimensions, and proposed boundaries are approximate and have been estimated based on current legal

DISCLAIMER AND ABSENCE OF WARRANTIES: All information contained in this brochure and all related materials are subject to the terms and conditions outlined in the Purchase Agreement. The property is being sold on an "AS IS, WHERE IS" basis, and no warranty or representation, either expressed or implied, concerning the property is made by the Seller or the Auction Company. All sketches and dimensions in the brochure are approximate. Each potential bidder is responsible for conducting

e-mail: auctions@schraderauction.com

