

# Farm Equipment AUCTION



CASS COUNTY • LOGANSPORT, IN

**SEPTEMBER 2019**

SUN	MON	TUE	WED	THU	FRI	SAT
1	2	3	4	5	6	7
8	9	10	11	12	13	14
15	16	17	18	19	20	21
22	23	24	25	26	27	28
29	30					

**75<sup>th</sup> ANNIVERSARY**  
Since 1944 **SCHRADER**

**CORPORATE HEADQUARTERS:**

950 N. Liberty Dr., Columbia City, IN 46725

**AUCTION MANAGER:**

**Arden Schrader, 260-229-2442**

AC63001504, AU01050022

**TERMS:** Cash or Check w/proper ID. 4% convenience fee for credit cards. Announcements made the day of the auction take precedence over any printed material. Not responsible for accidents. Lunch Available.

Follow us on:

**800-451-2709 • SchraderAuction.com**



800.451.2709

SchraderAuction.com

CASS COUNTY • LOGANSPORT, IN



**Tractors  
Motor Home  
Dry Spreader  
Excavator  
Bulldozer  
Payloader  
Planting / Tillage**



# Farm Equipment AUCTION

**TUESDAY, SEPTEMBER 24 • 11 AM**



**LIVE INTERNET BIDDING**

Visit [SchraderAuction.com](http://SchraderAuction.com) for Details  
or call Arden Schrader 800-451-2709



# Farm Equipment AUCTION

CASS COUNTY • LOGANSPORT, IN  
TUESDAY, SEPTEMBER 24 • 11 AM

**AUCTION LOCATION:** 5 miles south of Logansport, IN on SR 29 to the corner of SR 218 East and SR 29.

## • TRACTORS • MOTOR HOME

- **2000 New Holland TV 140 Bidirectional** tractor, NH 7614 loader, 8' bucket & grapple, 480/85R34 tires, hydro, 3sp, front & rear 3pt & pto, 3 front remotes, 6 rear remotes, 1020 hrs
- **Set of 4 52" tires** for TV 140, straddles 4 rows
- **2006 John Deere 4720 e hydro MFWD** tractor, cab, 3pt, pto, 3 remotes, 12 front weights, 3 sets of rear weights, 1347 hrs
- **1985 Case 4994 4WD** tractor, 12 sp powershift, 20.8x38 hub duals, pto, 4 remotes, *shows 213 hrs, rebuilt trans 2008*
- **1961 Case 400 gas**, NF tractor, 14.9x38 tires, 3pt, pto, 1 remote, *restored*
- **1958 International 350 Utility** tractor, gas, 14.9x28 tires, 3pt, pto, 1 remote, 2469 hrs
- **1976 GMC gas, motor home**, air ride, tandem axle, generator, 59,853 miles

## • DRY SPREADER • EXCAVATOR • BULLDOZER • PAYLOADER

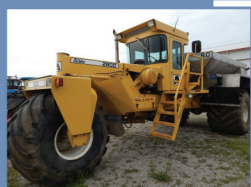
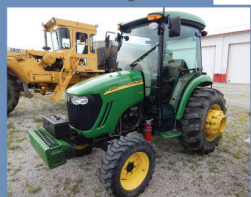
- **1983 Big A 2600 dry spreader**, GVM Transpread SS 8 ton box, new control on box, variable speed belt & spinners, 29,391 miles
- **1985 Gradall G-880 diesel excavator**, telescoping rotating boom, 30" street tracks, 5' ditch bucket, 4519 hrs w/ 2 dirt & 1 ditch buckets for Gradall
- **1980 International H100 Series C payloader**, diesel, 26.5x25 tires, cab glass good, 10'6" bucket, *shows 2922 hrs w/ HEAVY DUTY root rake for IH H100 payloader*
- **1952 Caterpillar D4 bulldozer**, 8' blade w/ Tandem axle trailer for D4 (*no title*)

## • FOLDING CORN HEAD • FIELD CULTIVATOR • DISC RIPPER • BUSH HOG ROTARY MOWER • SNOW BLOWER • DITCH BANK MOWER • OVER SEEDER • 6 WAY BLADE • BRUSH CHIPPER • DITCHER • SPRAY TANK • SPRAY BOOM • SADDLE TANKS • HERD BROADCASTER

- **12x30 Geringhoff folding corn head**, approx. 3000 acres
- **43' Wilrich Quad 5 field cultivator**, 4 front gang wheels, 3 bar harrow, basket
- **7 shank Brent CPC disc chisel**, hyd fold rear gang, rolling basket
- **20' Bush Hog 2720 batwing rotary mower**, chain guards, front & rear, wedge hard rubber tires, 1000 pto
- **8' Fair Snocrete 848 A** double fan & spout snow blower, 1000 pto
- **5' Land Pride ditch bank mower**, 3pt, hyd drive, *like new*
- **6' Land Pride APS 1572 over seeder**, 3pt, *like new*
- **72" 3pt landscape rake**
- **10' Land Pride 3pt**, 6 way blade, hyd tail wheel
- **Vermeer BC 906 brush chipper**, 3pt, 540 pto
- **20" Hurricane pto ditcher**, 1000 pto
- **Best Way 500 gal spray tank**, 3pt, w/tail wheels, Ravens sidekick mixer
- **Best Way 60' spray boom**, 3pt, front mount, (tank and boom were used on New Holland TV 140)
- **300 gal poly saddle tanks & brackets** (CAT track tractor)
- **Herd Sure-Feed Broadcaster**, 750, 3pt, pto
- **Misc Case IH 2388 combine parts**

**OWNER: Ben Dillon, 614-264-4472**

**AUCTION MANAGER: Arden Schrader, 260-229-2442**



**LIVE INTERNET BIDDING**  
Visit [SchraderAuction.com](http://SchraderAuction.com) for Details  
or call Arden Schrader 800-451-2709

**AUCTIONEER'S NOTE:** Ben is retiring and making shed space. He has no need for this quality equipment. All Equipment has been stored inside and is in good condition. Don't Miss This Auction!

**800-451-2709 • [www.SchraderAuction.com](http://www.SchraderAuction.com)**

