

**AUCTION MANAGER:**

**Andy Walther:**  
1-877-747-0212 • 765-969-0401  
andy@schraderauction.com  
#63198513759 #57199875479

**CORPORATE HEADQUARTERS: OHIO HEADQUARTERS:**

950 N. Liberty Drive  
Columbia City, IN 46725

11707 W Lancaster Rd.  
Jeffersonville, OH 43128

**NOVEMBER 2017**

| Sun | Mon | Tue | Wed | Thu | Fri | Sat |
|-----|-----|-----|-----|-----|-----|-----|
|     |     |     | 1   | 2   | 3   | 4   |
|     |     |     | 8   | 9   | 10  | 11  |
| 5   | 6   | 7   |     |     | 17  | 18  |
| 12  | 13  | 14  | 15  | 16  | 24  | 25  |
| 19  | 20  | 21  | 22  | 23  |     |     |
| 26  | 27  | 28  | 29  | 30  |     |     |



[www.SchraderAuction.com](http://www.SchraderAuction.com)

**800-451-2709** - Columbia City Office

**740-426-9100** - Ohio Office

Follow us on:



Get our new iOS App



*Terms & Conditions*  
Cash, check with proper ID.  
We are not responsible for  
lost or stolen items. Load  
out Day of Auction. Food  
Available

*Alan Frey Retirement*  
**ABSOLUTE AUCTION**  
THURSDAY, NOV. 9TH @ 10AM



*Alan Frey Retirement*  
**ABSOLUTE AUCTION**  
THURSDAY, NOV. 9TH @ 10AM

8 miles southeast of WAPAKONETA, OH  
5 miles north of JACKSON CENTER, OH

- Tractors
- Combine, Heads & Wagons
- Semi Tractor, Trucks & Trailers
- Field Sprayer, Planter & Drill
- Tillage Equipment & Farm Support Equipment

**AUCTION LOCATION:**

21360 GUTMAN RD., WAPAKONETA, OH



**800-451-2709** [www.SchraderAuction.com](http://www.SchraderAuction.com)



# Alan Frey Retirement ABSOLUTE AUCTION

THURSDAY, NOV. 9TH @ 10AM

21360 GUTMAN RD., WAPAKONETA, OH

**DIRECTIONS:** From I-75 take Exit 110 (US 33) east 7 miles to OH SR 65. Turn right (south) and travel 2.5 miles to Gutman Rd. Then left to the Auction site.

## TRACTORS

- **2002 JD 7510 Tractor, MFWD, w/ MID Tech GPS, CAH,** 14.9 x 46 rears w/duals, 14.9R-30 fronts, 3 remotes, 1000 RPM PTO, Radar, Only 2,081 Hrs., quick-hitch, Nice! • **1993 JD 4960 Tractor, MFWD, CAH, w/ 4,916 hrs., 18.4 x 46"** rears w/duals, 16R-30 fronts, 3 remotes, 15sp. Trans., 1000 RPM PTO, 16 front weights, quick hitch, S#-4960P005797
- **2005 KUBOTA B7510 HSD Utility Tractor,** "Turf Special", 4wd, 910 hrs., pto, 60" mid-mount deck

## COMBINE • HEADS • WAGONS

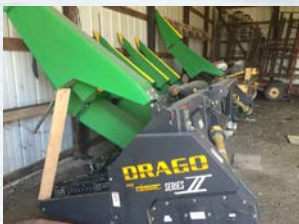
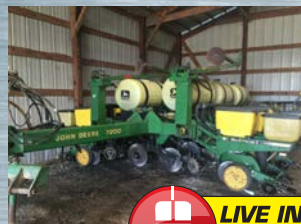
- **2002 JD 9550 WALKER COMBINE,** (4X4) RWA, yield monitor, hopper extension, contour master, 30.5L-32" fronts, 11R-22.5 rears, 2,202 E/ 1,510 S hours, SN#-HO9550W700412
- **2013 DRAGO Series II,** 6 row CORN HEAD, very nice!
- **JD 925 Grain Platform, poly finger,** 25 ft., UPDATED TO Contour Master, 25' header cart • **KILLBROS 555 side dump wagon,** light kit, 8 lug 425/65R22.5 tires, site windows • **KILLBROS 385 side dump wagon,** light kit, 8 lug 385 concrete truck tires, 13T gear
- **Unverferth / McCurdy #675 center dump,** 18T Gear, gravity wagon, light kit, 8 lug 425/65R22.5 tires

## SEMI TRACTOR • HOPPER BOTTOM

## • TRUCKS • TRAILERS

- **1993 WHITE GMC Volvo SEMI TRACTOR,** w/integral sleeper, Cummins 350hp N14-350E engine, 10 speed Eaton Fuller transmission, Air ride • **2002 CHEVY 3500 1-ton pick-up,** Duramax diesel, 4x4, double crew cab, 8' bed, DUALY, 170K miles, V# 1GCHK33152F101295
- **2004 TIMPTE Aluminum "Super Hopper" trailer,** 40', Shur-Lok Tarp, Spring ride • **2000 Tandem Axle tilt bed trailer,** 18', 8.25x20" tires, fold-down ramps and spare tire • **Tri-axle Heavy Duty equipment trailer,** 20', fold down ramps

**DON'T BE LATE! APPROXIMATELY 30 MINUTES OF SMALL ITEMS**



**PRE-AUCTION INSPECTION: MONDAY NOVEMBER 5TH, 10 AM – 12 NOON**

**AUCTIONEERS NOTE:** After a successful career in farming, Alan is retiring and will be offering a full-line of **QUALITY** equipment. Most items are very clean and in "field-ready" condition. You will be pleased with this offering. Hours listed are Pre-Harvest!

## FIELD SPRAYER

- **2006 SPRAY KING pull-type sprayer,** 90' Booms, Micro-trak automatic rate controller, 1,250 gallon tank, rinse tank, very nice unit, adjustable nozzles

## PLANTER • DRILL • 28% APPLICATOR

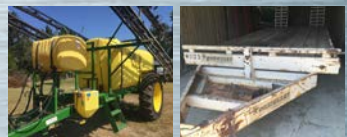
- **JOHN DEERE 7200 Max-Emerge 2 Vacuum Planter,** 12x30", front flex fold, liquid fertilizer in furrow and 2x2 placement, Updated with Precision planting units and 20/20 seed sense, Martin row cleaners, 2pt. hitch
- **JOHN DEERE 750 No-till drill,** 15', markers, 7.5" spacing, S#N00750X004959 • **28% Applicator, 750 gallon,** 12/13 coulters, John Blue double piston pump
- 11 knife, 3-point anhydrous applicator, older

## TILLAGE EQUIPMENT

- **2017 JD 2210 Field Cultivator 24.5',** w/Remlinger rolling harrow, bought new (less than 150 acres) very nice
- **2011 McFarlane Reel Disk Model RD-4025 "Reel-Till",** 25', nice condition • **JD 230 24' Disk w/ single bar harrow**
- **NOBLE 24' Spike tooth harrow w/rolling basket,** older • **5 shank deep ripper,** front coulters, 3pt

## FARM SUPPORT EQUIP. • MISC.

- **Bushhog Model 2512,** 12.5' rotary chopper, 2pt.
- **2010 STUMP GRINDER,** pto, 3pt., Model SG w/36" wheel, nice • **Caldwell grader blade,** 3pt. • **Hutchinson 48"x8" grain auger,** pto • **flat bed wagon w/ side boards,** 16' w/hoist • **(10) JD suitcase weights • (2) JD rear wheel weights R41030 • 48' & 36' aluminum extension ladders;** Manual tire changer; (3) portable grain aerators; poly tile pieces and connectors; Large pallet style shelving; 3" steel conduit; various steel, deck plate, sheet steel; Sev. Lengths of 6" & 8" elevator leg distribution tubing; Semi fifth wheel; 15 pallets of farm parts; implement tires; oils and fluids, and more!



**LIVE INTERNET BIDDING**  
Visit [SchraderAuction.com](http://SchraderAuction.com) for Details  
or call 800-451-2709.

**SCHRADER**  
Real Estate and Auction Company, Inc.

Owner: Alan Frey

[www.SchraderAuction.com](http://www.SchraderAuction.com)

**Equipment Questions:**  
Call Andy Walther  
765-969-0401

**800-451-2709**