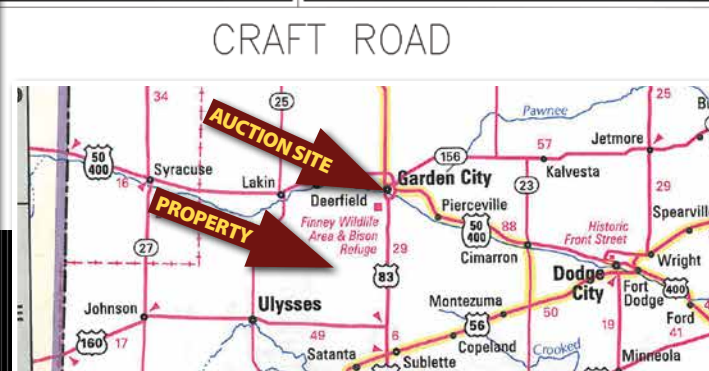
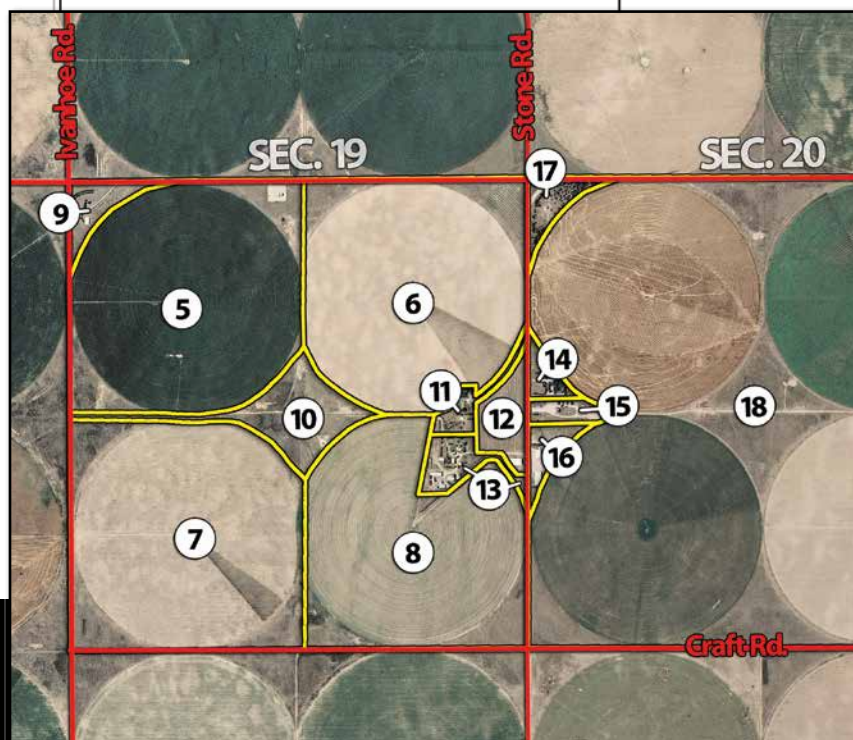
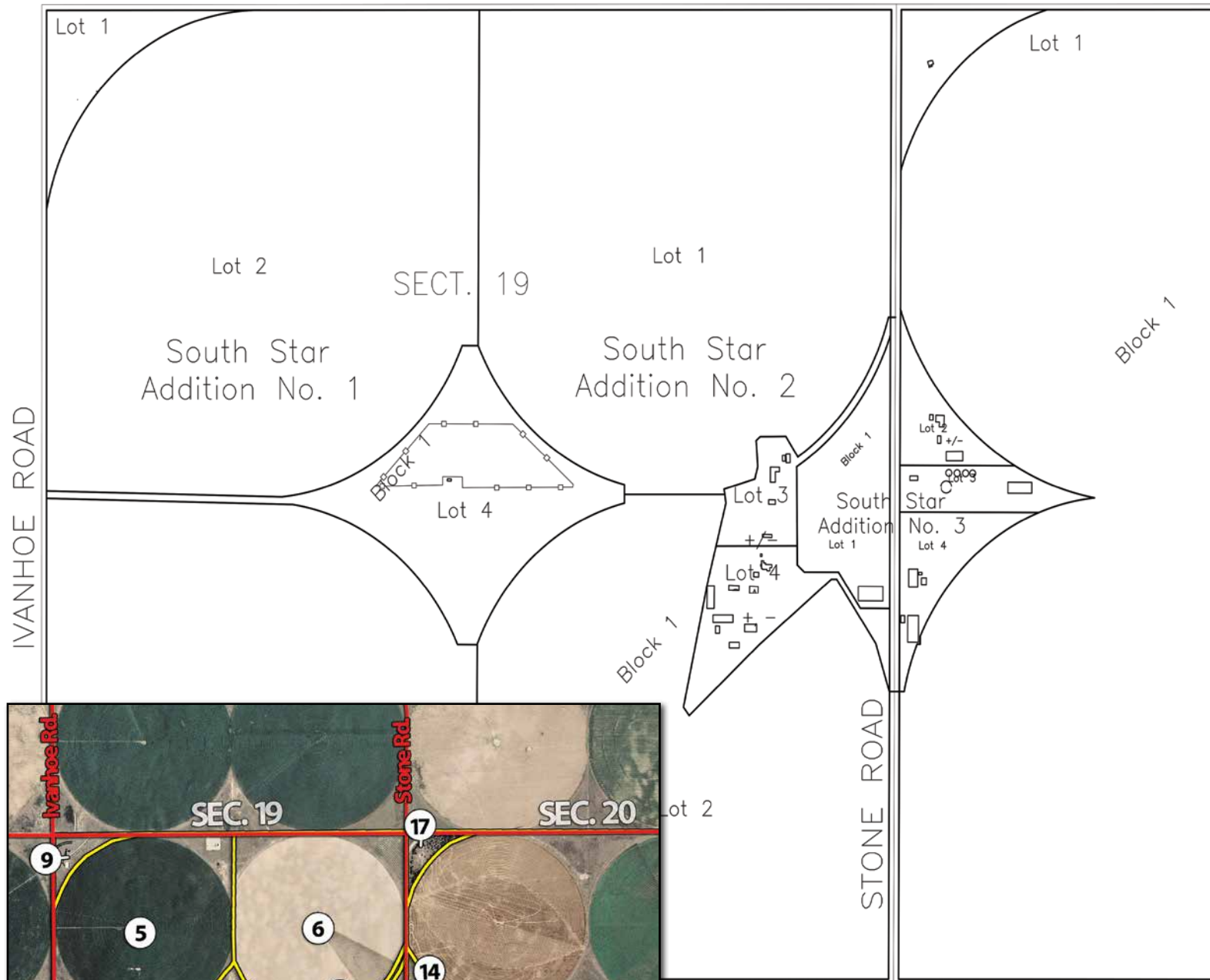


SURVEY MAP



FINNEY COUNTY, KANSAS

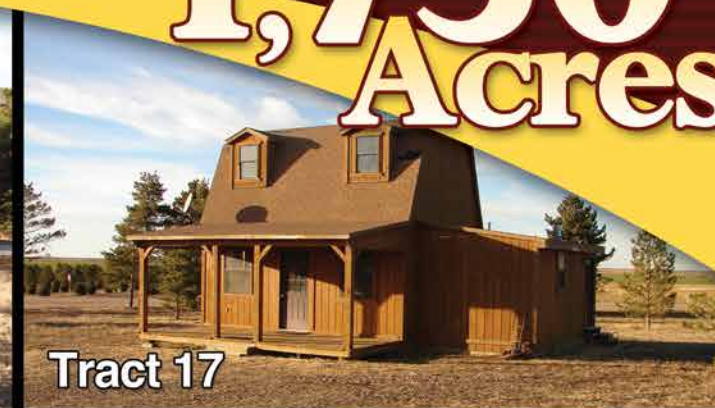
LAND AUCTION

16± MILES SOUTHWEST OF GARDEN CITY

1,750± Acres



Tract 11



Tract 17



Tract 13



Tract 14

HOME & IMPROVEMENTS BOOKLET



950 North Liberty Drive, Columbia City, IN 46725
800.451.2709 / 260.244.7606
www.schraderauction.com



450 Regency Parkway, Ste. 220, Omaha, NE 68114
402.548.4006 / 402.981.8831
www.lundco.com

SCHRADER In Cooperation with **LUND**
Real Estate & Auction Co., Inc. with COMPANY
800.451.2709 | www.schraderauction.com

EXCELLENT OPPORTUNITY IN SOUTHWEST KANSAS!

TUESDAY, FEBRUARY 26 • 10AM

Auction Held at the Clarion Inn - Garden City, KS

FINNEY COUNTY, KANSAS

LAND AUCTION

16± MILES SOUTHWEST OF GARDEN CITY

1,750± Acres

TUESDAY, FEBRUARY 26 • 10AM

Auction Held at the Clarion Inn - Garden City, KS

Tract 9

9.5+/- Acre building site with 48 X 90 X 12 and 24 X 25 Morton Buildings, serviced with its own domestic well and septic system.



Tract 11

5.5+/- Acres with a 3,452 Sq Ft split level house built in 1965. This house has central air and natural gas heat with 4 bedrooms and 3 baths. Included is a 48 X 45 Morton Building that is insulated with concrete floor, 24 X 38 Co-op Building that is heated, insulated with concrete floor, 14 X 60 Chicken House and 16 X 70 Carport.



Tract 13

10+/- Acres with a 1,548 Sq Ft bungalow house built in 1920. This house has central air and natural gas heat with 3 bedrooms and 2 baths. Included is a 40 X 120 Behlen Building that has a concrete floor, 24 X 38 Co-op Building that is heated, insulated with concrete floor, 30 X 60 wooden machine shed, 35 X 50 barn, 2 22 X 30 2-car garages 18,000 Bu Behlen grain bin and 35 X 120 concrete silage bunker.



Tract 14

5.5+/- Acres with a 2,288 Sq Ft ranch style house built in 1965. This house has central air and natural gas heat with 4 bedrooms and 2 baths. Included is a 50 X 100 Behlen Building, 24 X 38 Co-op Building that is heated, insulated with concrete floor and a 24 X 36 4 car garage with concrete floor.



Tract 17

8+/- Acres with an 800 Sq Ft cabin. This cabin has natural gas stove with a kitchen, 2 bedrooms and 1 bath.

